

## **Historic, Archive Document**

Do not assume content reflects current scientific knowledge, policies, or practices.



62.67

Ind

Painesville, Ohio

Phone: 3541

*Retail*

**STORRS & HARRISON  
INC.**

SPRING GARDEN BOOK

1942

APR 27 1942

U.S. Dept. of Agriculture



*The Painesville Nurseries*

## REGAL COLLECTION OF FRENCH HYBRID LILACS

*Syringa Vulgaris*

**A \$12.00 Value for \$9.00**

Again we offer our magnificent collection of FRENCH HYBRID Lilacs. You who already have one of these collections will surely wish to tell your friends about them or perhaps order more. Remember, 12 HUSKY 18-24-inch plants that will probably bloom this spring, for only \$9.00.

Alphonse Lavelle. Double intense blue.....	\$1.00
Charles Joly. Double purple red.....	1.00
Edouard Andre. Double clear rose.....	1.00
La Tour d'Auvergne. Double purple.....	1.00
Michael Buchner. Double rich bi-color.....	1.00
Madame Abel Chatenay. Double pure white.....	1.00
President Grevy. Double light blue.....	1.00
Vivian Morel. Double lilac.....	1.00
Waldeck-Rosseau. Double violet.....	1.00
Ludwig Spaeth. Single red.....	1.00
Charles the Tenth. Single blush violet red.....	1.00
Marie Legraye. Single pure white.....	1.00

Value \$12.00

We will send you one each of the above for \$9.00. Six of your selection for \$5.25; six of our selection for \$4.50.

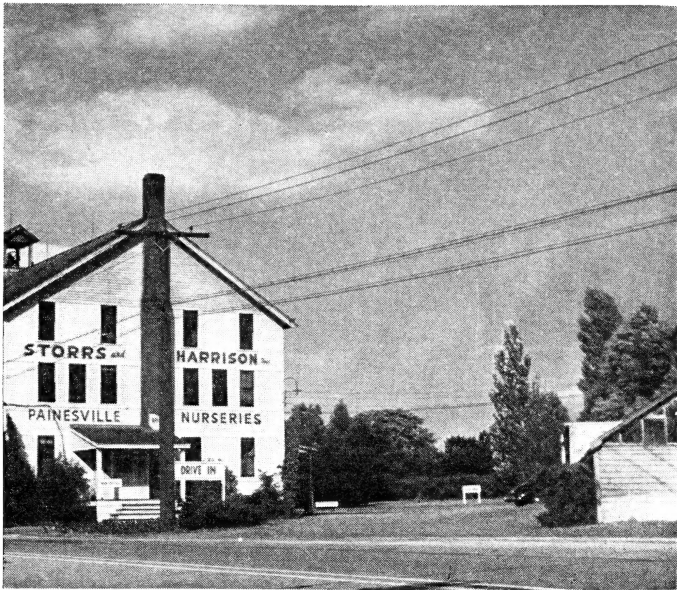
The same in larger 2 to 3-foot sizes, each \$1.25; 1 each of the twelve varieties, a value of \$15.00 for \$12.00. Six of your selection for \$6.75; six of our selection for \$6.00.

They will all be separately labeled and sent express collect.

## QUINTUPLET APPLE TREES

We wish to thank you for the many orders for QUINTUPLET APPLE TREES which you sent in last fall. They have completely exhausted our supply and we will not be able to ship any more until next fall. We will have a limited supply of fine ones at that time and would be glad to reserve one or more for you if you would care to send in your order and check or money order now. Please let us know if you want a Quintuplet tree that includes a Crab Apple.

The price is the same—\$3.00 each.



## A MESSAGE TO YOU

Due to world-wide conditions causing an acute shortage of paper and rapidly rising labor costs it has been necessary for us to reduce the size of our catalog. We are listing herein the items we believe will be of most interest and importance to you.

You will surely wish to have your own vegetable garden and berry patch as well as to start a small orchard. The Government Defense Program will undoubtedly urge this and with food prices sky-rocketing it will help you to meet your budget.

The collections we have listed are of plants and seeds that we consider of Special Merit. We have tried to make the group prices as favorable to you as possible. ANY ITEM LISTED IN THE COLLECTIONS MAY BE PURCHASED AT ITS INDIVIDUAL LISTED PRICE.

We ask that you stick to the lists of varieties as well as the prices shown when ordering any of the listed items. For items not listed we ask you to use the 1941 SPRING GARDEN BOOK. If this is not available SEND IN YOUR ORDER and we will price it and ship it C.O.D.

**With all orders of \$10.00 we will include 1 lovely Bittersweet Vine. With orders of \$18.00 or more we will include 2 of them.**

See page 29 for Index

## **ANNUAL AND PERENNIAL FLOWER SEEDS**

### **VEGETABLE SEEDS**

We offer the same fine list of seeds shown in the 1941 Spring Garden Book. Space does not permit listing of all varieties but the prices, in spite of greatly increased values, remain the same. This is a real BARGAIN, as some varieties have gone up as much as 75%. All packets, with very few exceptions, are priced at 10 cents each. We ask that you refer to your 1941 Spring Garden Book, when ordering.

If you do not have a 1941 Spring Garden Book at hand, send in your order with a deposit and we will price it at the same reasonable prices and ship the balance C.O.D.

## **YOUR VICTORY FOOD GARDEN**

**A \$2.80 Value for \$2.25 Postpaid**

In the present national world crisis, with our nation at war, the production of food is of paramount importance.

Much of our commercially grown fruits and vegetables must go to our allies. Therefore, our national leaders are urging all citizens, wherever conditions permit, to plant a garden and thus provide a part of the family's food supply.

We are urged to use all available space for this purpose, but not to sacrifice the beauty of our homes by digging up our front lawns or eliminating shrub and flower beds. For ornamental plantings as well, it is believed, should not be neglected since they will help maintain our national morale.

Most home owners have some unused space available in their back yard or the vacant lot nearby. Use it for your own benefit and pleasure as well as for your country.

We are offering a list of seeds for this purpose.

We are listing first the seeds that should be started in boxes or pots indoors and transplanted to their growing spot when danger of frost has passed. If a hot bed or cold frame is available, so much the better but window planting will do very well. Do not make the mistake of planting these seeds in the Garden and expecting a full crop. They will not produce that way as they require a little longer growing season than the others.

To be started indoors in a fine light soil about March 1st:

	Value
1 pkt. Golden Acre Cabbage. Fine solid heads. Crisp. Good keeper. Excellent flavor.....	\$ .10
1 pkt. Dwarf Erfurt Cauliflower. Sure heading and snow white. Quality unsurpassed.....	.15
1 pkt. Special Strain Giant Pascal Celery. Always a leader. Crisp, tender, flavorful.....	.10
1 pkt. California Wonder Peppers. Large, delicious, sure crop. Very sweet.....	.10
1 pkt. Trucker's Favorite Tomatoes. Big producer. Unexcelled flavor and color.....	.10

To be planted in the garden where they are to grow:

¼ lb. "Plentiful" Green Beans. Tender stringless ones that are fine, fresh and can well.....	.15
¼ lb. "Improved Golden" Wax Beans. A fit partner for the "Plentiful." Big crop.....	.15
¼ lb. "Fordhook" Bush Lima Beans. "Tried and true." They always produce.....	.15
1 pkt. Detroit Dark Red Beets. Fine for canning and pickling as well as table use fresh.....	.10
1 pkt. Nantes Half-long Carrots. Best source of Vitamin A and carotin. Serve raw and unpeeled wherever possible.....	.10
1 pkt. Clark's Special Cucumber. A fine variety for slicing or pickling. Produces large crops.....	.10
1 pkt. Golden Sunshine Sweet Corn. Early, sweet. A fine garden variety.....	.10
1 pkt. Stowell's Evergreen Sweet Corn. Large quantities of big white sweet ears. Standard for canning.....	.10
1 pkt. Big Boston Head Lettuce. Crisp and tangy. Sure header	.10
½ lb. Blue Bantam Peas. The finest early kind.....	.20
½ lb. Champion of England Peas. Medium early, of finest quality	.20
½ lb. Telephone Peas. The old reliable main crop. Fine for canning.....	.20
1 pkt. Early Scarlet Globe Radishes. Crisp, quick growing, solid	.10
1 pkt. Icicle Radishes. Best long white variety.....	.10
1 pkt. New Zealand Spinach. Finest obtainable.....	.10
1 pkt. Fordhook Bush Summer Squash. A reliable favorite.....	.10
1 pkt. Improved Hubbard Winter Squash. Rich buttery flavor. Keeps well.....	.10
1 pkt. Purple Top White Globe Turnips. Quick growing and tender.....	.10

Total Value \$2.80

**The seeds for the ENTIRE GARDEN will be sent you for \$2.25 Postpaid.**

Any item listed, as well as those in our 1941 Spring Book, may be purchased at the individual price.

There are a great many varieties of vegetable seeds which are of equal value to the varieties selected for the above list and because of the shortage of seed crops this year it may be necessary for us to substitute some of these equally good varieties on our later orders.

**BETTER ORDER EARLY  
LET'S ALL PLANT A GARDEN!**

**YOUR VICTORY FLOWER GARDEN****A \$2.20 Value for \$1.85**

It is our sincere belief that, in these times of great strain, the mental and physical health of our nation depends upon our retaining and giving added attention to those elements of beauty and harmony with which we have fortunately been able to surround ourselves in our United States.

Among these the flower garden is of major importance. We need the relaxing and rehabilitating effect of working with and enjoying the beauty of flowers.

Stability and normality beginning in the home are essential if our fighting men are to be able to retain the morale so important to ultimate victory.

Your garden will help you and thereby help your country.

Our annual flower seed collection includes the following kinds:

	Value
1 pkt. Sweet Alyssum. Lovely for edging. A mass of white all summer.....	\$ .10
1 pkt. Maximum Mixed Antirrhinum (Snapdragon). All the fine colors in a strong rustproof strain.....	.10
1 pkt. Giant California Sunshine Asters Mixed. A superb mixture of a fine variety.....	.10
1 pkt. Jubilee Gem Bachelor Buttons. Best strain of an old favorite	.10
1 pkt. Ball's Gold Calendula. Superfine for cutting.....	.10
1 pkt. Double Crested Cosmos. A new sensation. Mixed colors	.10
1 pkt. Heavenly Blue Morning Glories (Ipomea). A profusion of sky blue flowers.....	.10
1 pkt. Giant Hyacinth Flowered Larkspurs. Mixed colors. Excellent cut flowers.....	.10
1 pkt. Burpee Gold Marigolds.....	.10
1 pkt. Dwarf French Marigolds.....	.10
1 pkt. Double Glorious Gleam Hybrid Nasturtiums. All the name signifies.....	.10
1 pkt. Nicotiana Hybrids Mixed. Dainty fragrant flowers.....	.10
1 pkt. Mixed Balcony Petunias. A fine strain for bedding.....	.10
1 pkt. Rosy Morn Petunias. For borders and edgings. Delightful pink.....	.10
1 pkt. Drummondi Grandiflora Mixed Phlox. Fine for bouquets. All wanted colors.....	.10
1 pkt. Shirley Poppies. A profusion of flowers. Mixed colors....	.10
1 pkt. Double Mixed Portulacca (Moss Rose). Double form of an old favorite.....	.10
1 pkt. Scabiosa Double Mixed. Fine for cutting.....	.10
½ oz. Mixed Summer Spencer Sweet Peas.....	.15
½ oz. S. & H. Sunset Mix Sweet Peas.....	.15
1 pkt. Mammoth Flowered Mixed Verbenas.....	.10

Total Value \$2.20

**We will send you the entire collection for \$1.85 Postpaid.**



**THE HOME ORCHARD****An \$8.95 Value for \$7.50**

12 Fruit trees selected to satisfy the wants of the average family. All excellent strong growing varieties and guaranteed true to name. They are as follows:

**Sent Express or Freight Collect**

	Value
1 Cortland Apple. Fall ripening. Fine for eating or cooking.....	\$ .80
1 Baldwin Apple. Late fall ripening. Fine for eating or cooking.....	.80
1 Hungaria's Best Apricot. The hardiest. Fine fruit.....	.85
1 Sour Cherry Large Montmorency. Finest canner	.90
1 Sweet Cherry Black Tartarian. Heavy bearer	.80
1 Bartlett Pear. The old favorite.....	.80
1 Stanley Plum. Finest of the prune types.....	.90
1 Abundance Plum. Best eating and canning red	.90
1 Golden Jubilee Peach. Finest medium early...	.45
1 Hale Haven Peach. Outstanding quality.....	.45
1 Elberta Peach. Dependable main crop.....	.45
1 Champion Quince. Best for preserves and jellies	.85
<hr/>	
12 Trees	Total Value \$8.95

We send them to you for \$7.50.

**BEARING AGE APPLE TREES**

Fruit from the trees the season after they are set out. It is no longer necessary for you to wait several years after planting trees to get apples. We will furnish you with bearing age trees, most of which have borne fruit in the nursery. These are husky, well formed trees with a fine root system. We can supply seven varieties as follows:

Duchess	Red Astrachan	Whitney Crab
Early McIntosh	Stayman's Winesap	Yellow Transparent
	Wealthy	

Prices: each \$1.40; 3 for \$3.75; 1 each of all seven varieties for \$8.35.

### THREE YEAR OLD APPLE TREES

Big husky trees, more than an inch in caliper, in the following varieties:

Baldwin	Kendall	Red Northern Spy
Belmont	King	Rhode Island Greening
Cortland	Lodi	Stayman's Winesap
Delicious	Macoun	Sweet Bough
Duchesse	Maiden Blush	Tolman Sweet
Early Harvest	McIntosh	Transcendent Crab
Early McIntosh	Melba	Turley
Fameuse	Milton	Wagener
Gallia Beauty	Northern Spy	Wealthy
Gravenstein	Opalescent	Whitney Crab
Grimes Golden	Rambo	Winter Banana
Hyslop Crab	Red Astrachan	Yellow Delicious
Jonathan	Red Delicious	Yellow Transparent
	Red Duchesse	

Prices: Each \$1.25; 3 for \$3.25; \$12.50 per dozen; \$90.00 per 100.

**FINE TWO YEAR OLD APPLE TREES.** Same varieties as the above.

$\frac{11}{16}$ " 5-7' tall—ea. \$0.80; 10 for \$7.50; 100 for \$60.00

$\frac{9}{16}$ " 4-5" tall—ea. \$0.70; 10 for \$6.50; 100 for \$50.00.

### APRICOT TREES

**Sent Express or Freight Collect**

**THREE YEAR OLD.** Large well grown trees that will bear next year. Best varieties for this climate.

Alexander	Hungaria's Best	Moorpark
Early Golden		Superb

Prices: Each \$1.35; 3 for \$3.55; \$13.50 per dozen.

We also offer our usual fine 2 year old trees in the same varieties at the following prices:

$\frac{11}{16}$ " 4' up—each \$0.85; 10 for \$7.50; 100 for \$65.00

$\frac{9}{16}$ " 3-4'—each \$0.75; 10 for \$6.50; 100 for \$55.00

$\frac{7}{16}$ " 2-3'—each \$0.65; 10 for \$5.50; 100 for \$45.00

### QUINCE—Orange - Champion

**BEARING AGE QUINCE TREES.** These fine, well developed trees have borne fruit in the nursery. Sure to be the most satisfactory Quince trees you have ever had. Prices: Each \$1.25; 3 for \$3.25; \$12.50 per dozen.

**TWO YEAR OLD QUINCE TREES:**

$\frac{5}{8}$ "—Each \$0.85; 10 for \$8.00; 100 for \$70.00

**See Page 5 for Our Special Home Orchard**

**SOUR CHERRY TREES****Sent Express or Freight Collect**

This Spring we offer the two finest varieties of Sour Cherries:

Early Richmond

Large Montmorency

Well developed 2 year old trees:

 $\frac{11}{16}$ " 4' to 5'—each \$0.90; 10 for \$8.50; 100 for \$75.00 $\frac{9}{16}$ " 3' to 4'—each \$0.80; 10 for \$7.50; 100 for \$65.00**SWEET CHERRY TREES**

We offer the following fine varieties of Sweet Cherry Trees:

Fine 2 year old trees:

Black Tartarian

Schmidt's Biggereau

Governor Wood

Windsor

Lambert

Yellow Spanish

Napoleon

4-5' Tall—each \$0.90; 10 for \$8.50; 100 for \$75.00

3-4' Tall—each \$0.80; 10 for \$7.50; 100 for \$65.00

**PEACH TREES****Sent Express or Freight Collect**

We offer our usual fine selection of Peach trees. These are well shaped, sturdy ones with a fine root system.

Belle of Georgia

Golden Jubilee

Salberta

Carmen

Gold Drop

Salway

Champion

Hale, J. H.

Shippers Late Red

Cumberland

Hale Haven

South Haven

Crawford Early

Heath Cling

Valiant

Crawford Late

Kalhaven

Vedette

Elberta

Lemon Free

Veteran

Elberta Early

Rochester

Wilma

 $\frac{9}{16}$ " 3 $\frac{1}{2}$ " up—each \$0.45; 10 for \$3.50; 100 for \$30.00 $\frac{7}{16}$ " 2 $\frac{1}{2}$ -3 $\frac{1}{2}$ "—each \$0.35; 10 for \$3.00; 100 for \$25.00 $\frac{5}{16}$ " 2-2 $\frac{1}{2}$ "—each \$0.30; 10 for \$2.50; 100 for \$20.00

A SPECIAL LOT OF HALE HAVEN PEACH TREES of larger size:

 $\frac{11}{16}$ " 4' and up—each \$0.55; 10 for \$4.50

RIO OSO GEM. U. S. Plant Pat. No. 84

We are Licensed Distributors for Rio Oso Gem in Ohio, Illinois, Indiana, Iowa, Michigan, Minnesota, Missouri and Wisconsin only. A yellow-flushed freestone ripening 10 days after Elberta.

 $\frac{9}{16}$ " 3' and up—each \$0.75; 10 for \$6.00; 100 for \$50.00. $\frac{7}{16}$ " 2 $\frac{1}{2}$ -3'—each \$0.65; 10 for \$5.00; 100 for \$40.00**See Page 5 for Our Special Home Orchard**

## BEARING AGE PEAR TREES

**Express or Freight Collect**

We also have the following varieties of Pear trees of bearing age.

Duchess	Clapps	Bartlett
Douglas		Kieffer

Prices: Each \$1.40; 3 for \$3.75; 1 each of all five varieties for \$6.75

## THREE YEAR OLD PEAR TREES

More husky trees, soon to bear. We offer the following kinds:

Bartlett	Douglas	Lawrence
Buerre Bosc	Duchess d'Angouleme	Lincoln
Buerre d'Anjou	Flemish Beauty	Seckel
Cayuga	Garber	Sheldon
Clapps Favorite	Gorham	Tyson
Conference	Howell	Wordens-Seckel
	Kieffer	

Prices: each \$1.25; 3 for \$3.25; \$12.50 per dozen; \$90.00 per 100

**FINE TWO YEAR OLD PEAR TREES.** Same varieties as the above.

$\frac{11}{16}$ " 5-7' tall—each \$0.80; 10 for \$7.50; 100 for \$60.00  
 $\frac{9}{16}$ " 4-5' tall—each \$0.70; 10 for \$6.50; 100 for \$50.00

## PLUM TREES

**Express or Freight Collect**

**LARGE THREE YEAR OLD TREES** are available in the following varieties:

Abundance. Red	Lombard. Violet-Red
Bavay's Green Gage. Green	Monarch. Large Purplish Blue
Bradshaw. Dark Red	Moore's Arctic. Purple
Burbank. Cherry Red	Shippers Pride. Dark Purple
German Prune. Purple	Shropshire Damson. Purple
Grand Duke. Late Dark Red	Stanley. Large Dark Blue
Imperial Gage. Pale Green	Victory. Dark Red
Italian Prune. Purple	Wickson. Largest Red

Each \$1.25; 3 for \$3.25; \$12.50 per dozen.

**TWO YEAR OLD PLUM TREES.** These are our usual fine husky young trees with well furnished tops and fine root systems.

Abundance. Red	Lombard. Violet-Red
Bavay's Green Gage. Green	Monarch. Large Purplish Blue
Bradshaw. Dark Red	Red June. Red
Burbank. Cherry Red	Shropshire Damson. Purple
German Prune. Purple	Stanley. Large Dark Blue
Grand Duke. Late Dark Red	Wickson. Largest Red
Italian Prune. Purple	Yellow Egg. Large Yellow

Prices:  $\frac{11}{16}$ " 5-7'—each \$0.90; 10 for \$8.00; 100 for \$75.00  
 $\frac{9}{16}$ " 4-5'—each \$0.80; 10 for \$7.00; 100 for \$65.00

## **THE HOME STRAWBERRY PATCH**

Did you ever taste Strawberries picked fresh from your own garden? If not, you have a real treat in store for you when your HOME STRAWBERRY PATCH starts producing. We have selected 300 plants from our finest varieties and offer them to you at the unusually low price of \$5.50, postpaid to you.

The offer includes 50 Dorsett which is an early one and produces large crops of big, red, sub-acid berries. The 100 Premiers are the main crop and should give you plenty to can as well as some for shortcakes. The 50 Hebruns will give you plenty to finish off the usual season as these are superb late berries.

But that is not all. We also include 100 everbearing Mastodon which start producing after the regular crop is finished and continue till heavy frost. Strawberry shortcake for Thanksgiving is not unusual if a little protection is given them.

**REMEMBER—300 PLANTS FOR \$5.50 POSTPAID**

## **THE HOME RASPBERRY PATCH**

Who can resist the temptation of luscious bush-ripened raspberries fresh from the garden? No fruit makes more delicious jam and jellies and few are as good when canned for the winter. We offer 10 New Logan Black Raspberry bushes, 10 Cumberland Black Raspberry bushes, 20 Latham Red Raspberry bushes, 20 Taylor Red Raspberry, 10 Golden Queen Raspberry bushes; all 70 PLANTS for \$5.25 Postpaid.

New Logan for the early black one and Cumberland to finish off a long bearing season. Latham for early and main crop of reds, with Taylor, which has the longest bearing season of any red raspberry, to taper off on. Golden Queen to add the zest of novel color and unusual sugary sweetness. All these varieties are heavy bearers of fine quality berries.

**THE PRICE OF \$5.25 POSTPAID IS A REAL  
BARGAIN**

**RASPBERRY PLANTS**

	Mail Postpaid		Express or Freight Collect		
	Per 10	Per 100	Per 10	Per 100	Per 1000
<b>Black Raspberries</b>					
Cumberland, Early.....	\$ .80	\$5.00	\$ .60	\$4.00	\$30.00
New Logan, Main Crop....	.80	5.00	.60	4.00	30.00
<b>Purple Raspberries</b>					
Marion, Early.....	1.00	5.50	.75	5.00	42.50
Sodus, Main Crop.....	1.00	5.50	.75	5.00	42.50
<b>Red Raspberries</b>					
Chief, Early.....	.80	5.00	.65	4.50	40.00
Cuthbert, Shipper.....	.80	5.00	.65	4.50	40.00
Latham, Main Crop.....	.80	5.00	.65	4.50	40.00
Marcy, Mild Flavor.....	1.25	8.00	1.00	7.00	60.00
Newburgh, Med. Early....	.90	5.25	.70	4.75	42.50
Taylor, Long Season.....	.90	5.25	.70	4.75	42.50
<b>Yellow Raspberries</b>					
Golden Queen.....	1.00	5.50	.75	5.00	42.50

**STRAWBERRY PLANTS**

	Mail Postpaid			Express Collect			
	25	50	100	25	50	100	1000
Blakemore.							
Heavy Soil.....	\$.55	\$.95	\$1.70	\$.35	\$.65	\$1.20	\$7.50
Catskill.							
Large. Light Red..	.65	1.10	1.90	.45	.80	1.40	8.50
Clermont.							
Very Hardy.....	.60	1.05	1.80	.40	.75	1.30	8.00
Cresco.							
Good Shipper....	.55	.95	1.70	.35	.65	1.20	7.50
Dorsett.							
Early. Big Crop..	.60	1.05	1.80	.40	.75	1.30	8.00
Fairfax.							
Fine Flavor.....	.60	1.05	1.80	.40	.75	1.30	8.00
Gem.							
"Everbearing"...	.65	1.15	2.00	.45	.85	1.50	9.25
Gibson.							
Late. Extra Large.	.55	.95	1.20	.35	.65	1.20	7.50
Hebrun.							
Late. Big Crop...	.55	.95	1.70	.35	.65	1.20	7.50
Mastodon.							
"Everbearing"...	.90	1.50	2.50	.70	1.20	2.00	14.00
Premier.							
Main Crop.....	.60	1.05	1.80	.40	.75	1.30	8.00
Red Gold.							
New. Early.....	.55	.95	1.70	.35	.65	1.20	7.50
Sample.							
Fine. Not Fertile..	.60	1.05	1.80	.40	.75	1.30	8.00
Senator Dunlap.							
Main Crop.....	.50	.85	1.50	.30	.55	1.00	7.00
Wayzata.							
"Everbearing"...	2.00	3.40	5.75	1.75	3.00	5.00	30.00
Wm. Belt.							
Extra Large.....	.55	.95	1.70	.35	.65	1.20	7.50

## **OUR MASTER COLLECTION OF HYBRID TEA ROSES**

These are the REALLY FINE, tried and true kinds that we have selected as being the finest available. All are strong bushy growers producing a profusion of glorious bloom. This collection includes:

- 1 Betty Uprichard. Large flowering salmon pink with the exterior orange-carmine.
- 1 Cecil. An outstanding single novelty of a lovely golden yellow. The slender pointed buds are unusually attractive.
- 1 Condessa de Sastago. A gorgeous combination of warm oriental red and yellow.
- 1 Edel. The largest and most fragrant of the double white tea roses.
- 1 Eldorado. Large fragrant coppery blooms with a suffusion of orange and salmon pink.
- 1 Heinrich Wendland. A very fragrant bicolor whose many shadings give the effect of brilliant orange.
- 1 Joyous Cabalier. A king among double red roses. Brilliant, non-fading, fragrant.
- 1 Mevrow G. A. Van Rossem. The superb apricot buds open to a remarkably clear golden yellow.

**8 GLORIOUS ROSES IN OUR BEST No. 1 GRADE  
FOR \$6.50 POSTPAID.**

---

## HYBRID TEA ROSES

Sent Prepaid

Ordinary Varieties—\$0.75 each; 3 for \$2.00; \$7.50 per dozen.

Starred Varieties(\*)—\$0.85 each; 3 for \$2.25; \$8.50 per dozen.

Outstanding Varieties (†)—\$1.00 each; 3 for \$2.60; \$10.00 per dozen.

American Beauty. Very popular cerise-red.

Ami Quinard. Deepest of all reds.

Autumn. Free blooming, burnt orange, overcast with red. Fragrant.

\*Betty Uprichard. Outstanding salmon pink exterior orange carmine. Strong grower.

Briarcliff. Tall, dark foliage, columbia pink.

Caledonia. Large double white. Long pointed buds.

\*Cathrine Kordes. Long, pointed buds. Blood red with black shading. Fragrant. Heavy dark foliage.

†Cecil. Outstanding novelty. Single golden yellow.

Charles K. Douglas. Flaming scarlet flushed crimson. Fragrant.

\*Condessa de Sastago. Vigorous, free blooming, fragrant bicolor. Oriental red and yellow. Fragrant.

\*Copper King. Novelty. Single, large flowered. Burnished copper color. Vigorous grower.

\*Dainty Bess. Delicate single flowers. Ruffled. Soft flesh pink with wine-red stamens. Buds old rose.

Dame Edith Helen. Large, double, rose pink. Fragrant.

Duchess of Luxemborg. Large semi-double yellow. Strong grower.

E. G. Hill. Fine, deep velvety red. Fine buds.

Edel. Large fragrant double white.

Edith Nellie Perkins. Fragrant salmon pink flushed orange. Outside, oriental red shaded cerise-orange.

Editor McFarland. Glowing pink suffused yellow.

Eldorado. Fragrant, large. Copper suffused orange and salmon.

Etoile de France. Fragrant, deep rose red. Cerise center.

Etoile de Hollande. One of the best fragrant red roses.

Golden Dawn. Fine new yellow. Bud tinged rose. Fragrant.

Grenoble. Large. Spicy-fragrant. Clear scarlet.

Gruss an Teplitz. Very fragrant, deep velvety scarlet. Tall, vigorous, bush grower.

†Heinrich Wendland. Very fragrant, unfading nasturtium red. Reverse deep, golden yellow.

\*Hinrich Gaede. Buds nasturtium red. Large, double, fragrant flowers orange yellow. Outstanding.

Imperial Potentate. Large, fragrant, dark rose-pink.

\*Irish Fireflame. Single novelty. Orange scarlet buds, opening to salmon pink and gold.

\*Isobel. Single novelty. Large; flaming orange pink over bronze.

Joanna Hill. Heavy lemon buds opening Indian Yellow.

\*J. J. L. Mock. Large silvery pink faced with carmine. Fragrant.

†Joyous Cabalier. Large, double, brilliant, non-fading scarlet.

Kaiserin Auguste Viktoria. The outstanding white rose.

\*Katherine Pechtold. Orange flushed rose and gold. Clove pink fragrance. Vigorous, bushy grower.

Killarney, Double White. Fragrant snowy white. Fine for forcing.



**HYBRID TEA ROSES—Continued**

- Lady Alice Stanley. Flesh pink and coral rose.
- \*Leonard Barron. Softly blended salmon, shell pink and copper.
- Margaret McGredy. Brilliant orange-vermilion passing to carmine-rose.
- McGredy's Ivory. Large fragrant Ivory White.
- McGredy's Scarlet. New; velvety scarlet. Orange base.
- Mme. Butterfly. Salmon to flesh pink. Suffused gold and white.
- Mme. Edouard Herriot. Terra-cotta, bronze and copper.
- \*Mme. Joseph Perraud. Fragrant orange, yellow.
- \*Mme. Jules Bouche. White with primrose center. Fragrant.
- †Mevrow G. A. Van Rossem. Apricot buds opening golden yellow.
- Mrs. Chas. Bell. Soft shell pink shaded salmon.
- Mrs. E. P. Thom. Long yellow buds. Large canary yellow blooms. Free blooming; vigorous grower.
- Mrs. Henry Morse. Large, fragrant, silvery pink, veined vermilion. Outstanding.
- Mrs. Pierre S. Dupont. Red gold buds opening glorious yellow.
- \*Mrs. Sam McGredy. Large orange salmon. Vigorous grower.
- \*Mrs. W. C. Miller. Very large pearl pink shaded salmon.
- Miss Rowena Thom. Fiery rose, shaded old gold.
- Mons. Julian Potin. Rich deep golden yellow.
- \*Pink Dawn. Very fragrant. Buds deep rose pink opening to a lively pink. Heavy bloomer. Vigorous grower.
- †Poinsettia. Brilliant unfading scarlet. Free blooming.
- Pres. Herbert Hoover. Red-orange and gold. Long bud.
- Pres. Plumeocq. Fragrant. Coppery buff and deep salmon.
- Radiance (Pink). Very fragrant cameo pink. Large; double.
- \*Red Radiance. Same as Radiance but clear even red.
- Rev. F. Page Roberts. Fragrant yellow with red shadings.
- Roslyn. Deep orange buds opening to golden yellow.
- †Sequoia. Pumpkin yellow shaded apricot. Dark foliage.
- †Sir Henry Seagrave. Primrose to chrome yellow. Very fragrant.
- Sister (Soeur) Therese. One of the best of the yellow bicolors. Free blooming, vigorous grower.
- Souv. de Claudius Pernet. Old favorite fragrant sunflower yellow.
- Souv. de Georges Pernet. Oriental red shaded yellow.
- Souv. de Mme. Chambard. Long pointed coral buds, opening coral pink tinged peach.
- Syracuse. Very double, large scarlet crimson.
- Talisman. Favorite. Needs no description.
- \*The Doctor. Enormous, fragrant, satiny pink.
- Ville de Paris. Wonderful sunflower yellow.
- Willowmere. Shrimp pink shaded creamy gold.

Ordinary Varieties—\$0.75 each; 3 for \$2.00; \$7.50 per dozen.

Starred Varieties(\*)—\$0.85 each; 3 for \$2.25; \$8.50 per dozen.

Outstanding Varieties (†)—\$1.00 each; 3 for \$2.60; \$10.00 per dozen.

**All Hybrid Tea Roses shipped properly cut back for spring planting unless you specify otherwise.**

## TREE ROSES

### Sent Express or Freight Collect

Glorious, continuous bloom is enhanced by the fact that it is brought to eye level by the skillful grafting of ever-blooming roses on hardy rugosa stems. They have all the beauty of Hybrid Tea Roses at the height of a good sized shrub. Useful as accent plants in the shrub or tall perennial border or in pairs on either side of the garden walk. The color descriptions are the same as for Hybrid Tea Roses.

Price: Each \$3.50; 3 for \$9.50; \$35.00 per dozen

C. K. Douglas

Edel

Edith Nellie Perkins

E. G. Hill

Golden Dawn

Grenoble

Joanna Hill

K. A. Victoria

Maybelle Stearns. Lovely Peach Pink

Mme. Joseph Perraud

Mrs. E. P. Thom

Mrs. Henry Bowles

Mrs. Henry Morse

Souvenir de Mme. Chambard

Tree roses need some winter protection. We would suggest that you stake them and tie the tops in straw and burlap.

## POLYANTHA ROSES

### Postpaid

Blooming consistently from June until Autumn, the brilliant clusters of these lovely roses are of value in almost any location in the garden. They make an excellent low growing hedge, as well as a fine front for the shrub border. Each \$0.75; 3 for \$2.00; \$7.50 per dozen.

Cecile Brunner. Large sprays. Rosy pink on cream.

Elsa Poulsen. Fragrant clusters of cherry pink.

Glori Mundi. Dwarf growing. Bright orange.

Golden Salmon. Vivid orange-pink.

Orange Triumph. New, bushy, gorgeous orange.

## HYBRID PERPETUAL ROSES

### We Pay Shipping Charges

These are the faithful "June" Roses. Their abundant June and July flowers offset the fact that they do not bloom all summer. If cut back lightly and fertilized they will often repeat in the fall.

Price—Each \$0.70; 3 for \$1.95; \$7.00 per dozen

Frau Karl Druschki. Immense, long season; waxy white; exquisite buds.

George Arends. Very large, clear rose pink; best of the newer pinks.

Henry Nevard. Crimson scarlet; fine form; very fragrant.

Paul Neyron. Bright, ruddy pink; very large, thornless; intermittent.

## CLIMBING ROSES

### We Pay Shipping Charges

We offer all the gorgeous colors from the pure white of the White Dorothy to the unfading deep red of Paul's Scarlet. All the popular types and colors are included in this list of fine husky plants.

Each \$0.70; 3 for \$1.95; \$7.00 per dozen

Outstanding varieties (\*)—each \$0.80; 3 for \$2.25; \$8.00 per dozen.

American Beauty. Brilliant cerise red.

American Pillar. Single carmine rose. Cream center.

Dorothy Perkins. Double clusters. Warm shell pink.

Dr. Van Fleet. Large, double, flesh-pink.

Eugene Jacquet. Fragrant clusters of cherry red.

Excelsa. A blood-red Dorothy Perkins.

Gardenia. Dense creamy clusters. Yellow buds.

\*Jacotte. Warm yellow and coppery red. Fine climber.

\*Marie Gouchault. New light red. Popular type.

Mary Wallace. Semi-double. Rose pink and salmon.

\*Mme. Gregoire Staechelin. Outstanding. Long crimson buds opening lovely pearl pink. Fragrant.

\*Paul's Scarlet Climber. Best red climber.

\*Primrose. New. Unfading primrose yellow.

Roserie. Deep rose pink. Large clusters.

Silvermoon. Loose white flowers. Yellow stamens.

White Dorothy. Same as Dorothy Perkins but white.

## GRASS SEED

We offer our usual fine varieties of grass seed. The NEW VELVET SOD is one of the finest obtainable mixtures containing just the proper amount of Colonial Bent to give it balance to produce a high colored, heavy turf.

The SHADY LAWN is the old stand-by for that spot under the trees where it is so difficult to make anything grow. You will need from four to six pounds per thousand square feet.

### NEW VELVET SOD

1 lb.	Postpaid	@	\$0.65
3 lbs.	Postpaid	@	.62
5 lbs.	Postpaid	@	.60
10 lbs.	Postpaid	@	.56
25 lbs.	Not Prepaid	@	.52
50 lbs.	Not Prepaid	@	.48
100 lbs.	Not Prepaid	@	.45

### SHADY LAWN

1 lb.	Postpaid	@	\$0.67
3 lbs.	Postpaid	@	.64
5 lbs.	Postpaid	@	.62
10 lbs.	Postpaid	@	.58
25 lbs.	Not Prepaid	@	.54
50 lbs.	Not Prepaid	@	.50
100 lbs.	Not Prepaid	@	.47

### CHOICE GRASS SEEDS

	Postpaid			Not Prepaid		
	1 lb. @	5 lbs. @	10 lbs. @	15 lbs. @	25 lbs. @	50 lbs. @
Chewings Fescue....	\$1.00	\$ .95	\$ .90	\$ .85	\$ .83	\$ .80
Colonial Bent.....	1.20	1.17	1.15	1.06	1.03	1.00
Kentucky Blue Grass	.55	.50	.48	.40	.38	.35
Perennial Rye Grass.	.35	.33	.32	.28	.27	.25
Red Top (Fancy)....	.45	.40	.35	.31	.30	.28
White Dutch Clover..	1.10	1.05	1.00	.95	.93	.90
Hairy Vetch (Soil Conditioner).	.50	.45	.40			

**OUR SPECIAL SHRUB COLLECTION**

**A \$9.85 Value for \$6.00. Express or Freight Collect**

Again we offer the outstanding value of the season. Those who purchased our SPECIAL SHRUB COLLECTION last fall will surely want another for themselves or their friends. Remember—1 each of the following:

Five-leaved Aralia. <i>Acanthopanax pentaphyllum</i> .....	\$0.70
Red Twig Dogwood. <i>Cornus alba siberica</i> .....	.65
Rochester Deutzia. <i>Deutzia scabra</i> Pride of Rochester.....	.50
Weeping Forsythia. <i>Forsythia Suspensa</i> .....	.60
Pink Bride Honeysuckle. <i>Lonicera tatarica grandiflora</i> .....	.65
Gordon Mockorange. <i>Philadelphus gordonianus</i> .....	.50
Golden-leaf Nine Bark. <i>Physocarpus opulifolia aurea</i> .....	.50
Glossy Buckthorn. <i>Rhamnus frangula</i> .....	.60
Ural False Spirea. <i>Sorbaria sorbifolia</i> .....	.70
Korean Spirea. <i>Spirea trichocarpa</i> .....	.60
Purple Lilac. <i>Syringa vulgaris</i> .....	.60
African tamarix. <i>Tamarix africana</i> .....	.60
Double-file Viburnum. <i>Viburnum tomentosum</i> .....	.90
Witch Hazel. <i>Hamamelis virginiana</i> .....	1.25
Pink Weigala. <i>Weigela Rosea</i> .....	.50

Value \$9.85

From the lovely gold of the Forsythia to the November blossoms of the Witch Hazel, this collection will give you a constant display of beautiful flowers, exquisite berries, picturesque foliage and twig color.

We will send you all 15 of the shrubs in a husky, well-grown 3 ft. or 4 ft. size for \$6.00. **Express or Freight Coll.**

**A COLLECTION OF THE EARLIEST FLOWERING SHRUBS**

**A \$4.40 Value for \$3.75**

What are the earliest flowering shrubs you have? This is a question that is constantly being asked of Nurserymen and Landscapers. People everywhere want something to relieve the drabness of winter in their gardens. We have selected in the following group, what we think is a leader in each of five early blooming classes. There are variations in color, foliage, height, and growth habits included.

1 Downy Shadblow ( <i>Amelanchier canadensis</i> ). A drift of snow just after the real snow has left us. The showy purple-red berries that follow are attractive to birds. 3-4'.....	\$1.25
1 Showy Forsythia ( <i>Forsythia intermedia spectabilis</i> ). The finest of the early flowering Golden Bells. A universal favorite. 3-4'....	.60
1 Flowering Quince ( <i>Cydonia japonica</i> ). Gorgeous flaming pink blossoms. Attractive glossy foliage. Compact growth. 18-24''.	.45
1 Double Pink Flowering Almond ( <i>Prunus glandulosa</i> ). In early Spring the slender erect branches are like fairy wands of lovely apple blossom pink. 18-24''.....	.60
1 French Hybrid Lilac. Mme. Abel Chatenay. The early bird of the French Lilacs. Beautiful heavy clusters of rich creamy white. A robust grower and free bloomer. 3-4'.....	1.50
5 Shrubs.....	Value \$4.40

**Sent to you Express or Freight Collect for only \$3.75**

**A COLLECTION OF SHRUBS  
WITH FRUIT ATTRACTIVE TO BIRDS  
A \$6.90 Value for \$5.75**

When we consider our gardens we think of lovely flowers, attractive foliage and good growth habits, but often forget something that is one of the most important accessories to it. What would our gardens be without birds? If we expect to be entertained with their song and delighted with their color and presence, we must provide some food for them. The following shrubs will feed them far into the winter.

1	Aronia arbutifolia. White flowers, red berries.....	3-4'	\$0.80
1	Cornus amomum. White flowers, blue berries.....	3-4'	.60
1	Euonymus europeas. Yellow flowers, pink, orange and white fruits.....	3-4'	.90
1	Ligustrum ibota. White flowers, blue berries.....	2-3'	.35
1	Lonicera morrowi. Pink flowers, red berries.....	3-4'	.65
1	Photinia villosa. White flowers, scarlet fruit.....	3-4'	.75
1	Rhamnus cathartica. White flowers, black berries....	3-4'	.60
1	Sambucus canadensis acutiloba. White flowers, purple berries.....	3-4'	.65
1	Viburnum opulus. White flowers, cerise berries.....	3-4'	.80
1	Weigela "Eva Rathke." Brilliant red flowers that are a "Mecca" for humming birds.....	3-4'	.80
10	Shrubs.....	Value	\$6.90

**Sent to you for \$5.75, Express or Freight Collect**

**A COLLECTION OF SHRUBS BEARING UNIQUE  
AND HIGHLY ORNAMENTAL FRUITS  
A \$6.15 Value for \$5.15**

This group is composed of shrubs that will add a great deal of interest to your garden. They are hardy, strong growing types and should be given room to grow. Plant at least 4 feet apart. Other shrubs and trees have similar characteristics but we believe these to be the cream of the crop.

1	Bladder Senna (Colutea arborescens). Long plumes of yellow and dark red pea-like flowers. Fruits are red, bladder-shaped pods that are very attractive and hang for a long time. 3-4'...	\$0.75
1	Winged Euonymus (Euonymus alatus). Lovely spring foliage which, in the fall, complements the profusion of lasting bright red berries with its flaming scarlet. Stems are "corked" with a unique winged bark. 3-4'.....	1.50
1	Winterberry Euonymus (Euonymus bungeanus). An attractive erect growing shrub having entrancingly odd fruits of pink, white and orange. A most desirable shrub. 3-4'.....	1.00
1	Fortune Fontanesia (Fontanesia Fortunei). Large shiny leaves. Many small white flowers. The peculiar, brown, nut-like fruits that persist until early winter are most attractive. 3-4'.....	1.65
1	Winterberry Holly (Ilex verticillata). A deciduous member of the holly family whose brilliant red berries cling far into the winter. Foliage is a lustrous dark green mass. 3-4'.....	1.25
1	American High-bush Cranberry (Viburnum americanum). The broad, white flower clusters are followed in July by flaming scarlet berries that last throughout the winter. Lovely foliage. Sturdy growth. 3-4'.....	1.00
6	plants.....	Value \$6.15

**Sent for \$5.15 Express or Freight Collect**

**A COLLECTION OF FRAGRANT SHRUBS****A \$6.40 Value for \$5.25**

In every garden there is a particular spot where one likes to linger just a little longer than anywhere else. This desire is often created by the wish to absorb a little more of the lovely fragrance of some nearby plant.

We have selected a group of flowering shrubs, which are inexpensive, require a minimum of care, are easily transplanted and, above all, send up a fragrance that is almost irresistible. The Collection contains:

1 Dubonnet Butterfly Bush ( <i>Buddleia Dubonnet</i> ). Gorgeous, deliciously fragrant, wine colored flowers all summer. 2 yr. plants. . .	\$0.75
1 Button Bush ( <i>Cephalanthus occ.</i> ). Dainty white "button" buds opening into a profusion of delicate fragrant white flowers. 2-3'	.55
1 Spice Bush or Sweet Shrub ( <i>Calycanthus floridus</i> ). Unique reddish brown blossom with an enticing, spicy fragrance. Attractive, glossy deep green foliage. 18-24" . . . . .	.55
1 Sweet Pepper Bush ( <i>Clethra alnifolia</i> ). Handsome white fragrant blossom spikes in summer when most other shrubs have long finished blooming. 2-3' . . . . .	.80
1 Russian Olive ( <i>Eleagnus angustifolia</i> ). Profuse fragrant yellow blossoms. Attractive gray-green foliage. 3-4' . . . . .	.75
1 Winter Honeysuckle ( <i>Lonicera fragrantissima</i> ). Fragrant, yellow and white spring flowers. Foliage partially evergreen. 2-3' . . .	.50
1 Double Mockorange ( <i>Philadelphus virginial</i> ). All the perfume of an orange grove from superb double white flowers. 2-3' . . . .	.60
1 Purple Lilac ( <i>Syringa vulgaris</i> ). Here is one we need not describe. You are well acquainted with this eternal favorite. 2-3'	.50
1 White Lilac ( <i>S. v. alba</i> ). A white counterpart of the purple. 2-3'	.65
1 Chinese Lilac ( <i>Syringa chinensis</i> ). Many vivid reddish purple blossom clusters with a most enticing fragrance. 2-3' . . . . .	.65
10 Shrubs . . . . . Value	\$6.40

**Sent for \$5.25 Express or Freight Collect****A COLLECTION OF SHRUBS FOR SHADE****A \$5.95 Value for \$4.85**

You need not sacrifice those lovely shade trees to have a shrub row or group that will add color and interest to your landscape plans. The group we offer will flourish with a minimum of light and air circulation.

1 Downy Shadblow or Juneberry ( <i>Amelanchier canadensis</i> ). Snow-white flowers, edible purple-red berries. 3-4' . . . . .	\$1.25
1 Witch Hazel ( <i>Hamamelis virg.</i> ). Attractive, bushy growth. Yellow flowers in Nov. and Dec. 3-4' . . . . .	1.25
1 European Privet ( <i>Ligustrum vulgare</i> ). Lustrous deep green foliage and attractive blue berries. 2-3' . . . . .	.50
1 Fragrant Honeysuckle ( <i>Lonicera fragrantissima</i> ). Partially evergreen. Fragrant white flowers. Red berries. 3-4' . . . . .	.65
1 Sweet Mockorange ( <i>Philadelphus coronarius</i> ). Attractive delicate white flowers. Very fragrant. 3-4' . . . . .	.50
1 Coral Berry ( <i>Symphoricarpos vulgaris</i> ). Pink and white flowers. Red berries. 3-4' . . . . .	.55
1 Linden Viburnum ( <i>Vib. dilatatum</i> ). White flrs. Blue berries. 3-4'	1.25
Value	\$5.95

**This entire group of 7 fine plants for \$4.85****Sent Express or Freight Collect**

**A COLLECTION OF SHRUBS  
THAT BLOOM IN LATE SUMMER AND FALL  
A \$5.75 Value for \$4.75**

How often we look at our gardens in late August and on through the Fall and wish that we might have more shrubs in blossom to add to the beauty of the "Mums" and other late blooming herbaceous plants. This collection will "fill the bill."

We offer:

1 Concord Butterfly Bush ( <i>Buddleia Concord</i> ). Rich Concord Grape colored. Fine for cutting. 2 yr. No. 1.....	\$0.75
1 Bluebeard ( <i>Caryopteris incana</i> ). Lovely blue spikes. Fine for cutting. 2 year No. 1.....	.60
1 Chinese Beauty Berry ( <i>Callicarpa purpurea</i> ). Dainty pink flowers in August with orchid colored berries forming before the flowers are gone. Unusually attractive. 2-3'.....	.60
1 Witch Hazel ( <i>Hamamelis virginiana</i> ). Yellow flowers in <i>November and December</i> . 2-3'.....	1.00
1 Shrub Althea or Rose of Sharon ( <i>Hibiscus syriacus</i> ). Showy blossoms in late August and September. 2-3'.....	.50
1 Purple Bush Clover ( <i>Lespedeza formosa</i> ). One of the showiest and most reliable of the summer and fall bloomers. A mass of pinkish purple. Long-lasting; fine for cutting. 2 year No. 1....	.60
1 Pee Gee Hydrangea ( <i>Hydrangea paniculata grandiflora</i> ). Great pink and white blossom heads that may be dried and used in Winter bouquets. 18-24".....	.60
1 Hills of Snow Hydrangea ( <i>Hydrangea arborescens grandiflora</i> ). Masses of pure white in late August. 18-24".....	.60
1 Chaste Shrub or Tree ( <i>Vitex macrophylla</i> ). Rich lavender blue flower spikes from late July until early frost. Attractive foliage. 2-3'.....	.50
<hr/>	
9 Shrubs	Value \$5.75

**Our Special Offer—The Whole Group \$4.75  
Sent Express or Freight Collect**



## TWO COLLECTIONS OF EVERGREENS FOR THE HOME OWNER

Quite often when landscaping the new home or replanting the older one we are faced with the problem of not knowing just what varieties are best for our purpose without going beyond our budget limitations. In the following collections we have tried to choose evergreens that are sightly, hardy, require a minimum of care, and are not too costly.

Collection Number One consists of eight evergreens that will fit into the entrance planting of almost any home. The Pyramidal Arbor Vitaes should be planted in the corner next to the terrace or steps and about 2 feet from the building. The compact Arbor Vitaes about 3 feet directly in front of them. The Spreading Yews about 3 feet from the Pyramids and 2 feet to the outside of the Compact Arbor Vitaes. Place Pfitzer Spreading Junipers about 5 feet outside of the Pyramids, the same distance from the building.

Collection Number Two is comprised of six evergreens suitable for the outside front corners of the house. The Hemlocks should be planted just inside the front corner and about 2½ feet from the building. The Swedish Junipers go just outside the Hemlocks and about 4 feet from the building. The Silver Red Cedars can be planted about 2½ feet diagonally off the building corners. These collections may be purchased as a whole or in two separate units. They will give you the desired foliage and color variations and add far more than their cost to the property value. Remember—"It's not a Home until it's planted."

### COLLECTION No. 1—FOR THE FRONT ENTRANCE

2	① Pyramidal Arbor Vitaes	2-2½' B & B	\$2.75	\$5.50
2	② Compact Arbor Vitaes	15-18" B & B	1.50	3.00
2	③ Spreading Yews	15-18" B & B	2.75	5.50
2	④ Pfitzer Spreading Junipers	15-18" B & B	2.75	5.50

8 Evergreens Value \$19.50

**Sent to you for \$14.50 Express or Freight Collect**

### COLLECTION No. 2—FOR THE OUTER CORNERS

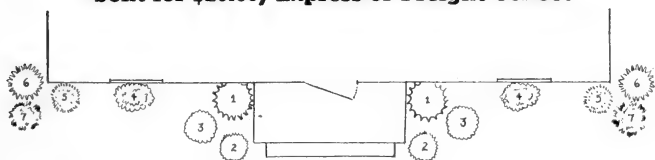
2	⑥ Canadian Hemlocks	2-2½' B & B	\$2.75	\$5.50
2	⑦ Silver Red Cedars	2-2½' B & B	3.25	6.50
2	⑧ Swedish Junipers	18-24" B & B	2.25	4.50

6 Evergreens Value \$16.50

**Sent to you for \$13.00 Express or Freight Collect**

**Both Collections, a \$36.00 Value**

**Sent for \$25.90, Express or Freight Collect**



## 2 COLLECTIONS OF RARE AND UNUSUAL ORNAMENTAL TREES

These two collections have been selected for discriminating people who wish to plant something other than the usual "run of the mine" decorative trees.

**Collection No. 1 includes:**

	Value
1 Red Flowering Horse Chestnut tree ( <i>Aesculus carnea</i> ). This lovely tree, with its broad multi-leaved foliage is graced by gorgeous cone-like clusters of bright red blossoms in late Spring. Rare, unusual, distinctive. 4-5'.....	\$5.00
1 Angelica Tree ( <i>Aralia japonica</i> ). The long fern-like foliage fronds are complemented in late Spring by large creamy plumes of blossoms. Truly outstanding. Attractive to Bluebirds. 5-6'....	2.00
1 Hop Tree ( <i>Ptelea trifoliata</i> ). An unusually striking novelty. Dark green aromatic leaves, fragrant golden flowers and intriguing hop-like seeds. Strong 5-6' tree.....	1.50
1 European Bird Cherry ( <i>Prunus padus</i> ). Delicate, dainty white spring flowers, excellent growth habits and attractive glossy green foliage would make this tree invaluable to any landscape plan. However, when you find that it produces a profusion of lovely red berries, which will bring the birds from far and wide, your enthusiasm will know no bounds. 5-6'.....	1.75
1 Camperdown Weeping Elm ( <i>Ulmus glabra camperdowni</i> ). Beautiful specimens of this excellent tree are found in many of the finest gardens and arboretums in the U. S. It forms a broad, flat-topped tree whose unique gnarled limbs spread to form an almost circular head of attractive deep green leaves. Grafted on 5' to 6' Stems.....	3.00
5 Trees	Total Value \$13.25

**Sent to you for only \$11.50**

**Collection No. 2 includes:**

1 Maidenhair Tree ( <i>Ginkgo biloba</i> ). Its picturesque growth and dainty leaves, shaped like maidenhair fern, form one of the few connecting links with prehistoric plant life. 5-6'.....	\$3.00
1 Kentucky Coffee Tree ( <i>Gymnocladus dioica</i> ). Graceful, twice pinnate fronds of bluish-green foliage, two to three feet long; panicles of attractive greenish white flowers. The fruit is contained in large, flat, red seed pods that persist far into the winter. 5-6'.....	2.75
1 Purple-leaved Red Flowering Crab ( <i>Malus purpurea eleyi</i> ). A leader in its type, this tree retains its beautiful purple foliage color throughout the hot summer months. The vivid spring flowers defy description. 4-5'.....	2.00
1 Amur Cork Tree ( <i>Phellodendron amurense</i> ). Feathery, deep green, oval leaflets on ten to fifteen inch stems. Dainty, primrose yellow flowers in summer and glossy black fruit in fall and winter. Leaves and fruit aromatically fragrant when crushed. 5-6'.....	2.00
1 Weeping Mountain Ash ( <i>Sorbus aucuparia pendula</i> ). A beautiful and novel weeping form of a universal favorite. Strong, hearty grafted tops on 5-6' stems.....	4.00
5 Trees	Value \$13.25

**Sent to you for \$11.50**

**Both of these collections sent for \$21.75**

**A \$26.50 Value**

**Sent Express or Freight Collect**

## COLLECTION OF FLOWERING ORNAMENTAL TREES

**A \$10.50 Value for \$8.50**

This offer includes:

1 Double Red Flowering Peach.....	3-4'	\$1.00
(Amygdalus persica rubra plena)		
1 Red Bud or Judas Tree.....	3-4'	2.00
(Cercis canadensis)		
1 White Flowering Dogwood.....	2-3'	1.00
(Cornus florida)		
1 Red Flowering Dogwood.....	2-3'	1.50
(Cornus florida rubra)		
1 Goldenrain Tree.....	4-5'	2.00
(Koeleutaria paniculata)		
1 Bechtel's Double Pink Flowering Crab.....	3-4'	1.50
(Malus ioensis plena)		
1 Finest Double Pink Flowering Cherry.....	3-4'	1.50
(Prunus serrulata James H. Veitch)		

The total value is \$10.50 at Spring 1941 prices. We will send you the entire group of seven trees for \$8.50.

They run the gamut of gorgeous spring bloom, lustrous summer foliage and brilliant fall foliage. A wide contrast of colors is achieved in the exotic reds of the Double Red Flowering Peach and Red Flowering Dogwood and the glorious yellow of the Goldenrain Tree. The bold pink of the James H. Veitch Flowering Cherry shades off into the more delicate shades of the Red Bud and the Bechtel's Crab. We all know the White-flowering Dogwood. Its beauty defies description.

All the trees are hardy. All have attractive summer foliage. All have unusual fall coloring. They may all be used as simple lawn specimens, or as accent points in the shrub border but their best affect is achieved when planted haphazardly in a mass about 7 feet apart. Remember—These 7 lovely trees, a \$10.50 value for \$8.50.

## PERENNIAL GARDEN COLLECTIONS

We offer, for spring planting, three (3) collections of Perennial Plants. The first is of low growing kinds that are suitable for Rock Gardens or for the front of the Perennial Border. The second is of plants taller and more bushy in growth which fit in well behind the first group in the border or in the larger soil areas in the Rockery. The third group consists of tall, broad plants that are highly suitable for the background. Great care has been used in selecting these groups to assure you of a wide variation in color as well as continuity of blooming season.

In preparing the perennial bed be sure that the soil is well broken up. If it is available, a quantity of well rotted barnyard manure is highly beneficial. If not, any good compost or humus will help. A tablespoonful of steamed bonemeal planted with each plant will do wonders.

Do not have the perennial border too wide as it is then difficult to cultivate and care for. A bed varying in width from three to six feet is often more desirable than one built along straight lines.

It is often desirable to use an occasional specimen shrub as an accent in the Perennial border.

Mass planting of individuals is desirable but not a necessity. Variety adds to length of blooming season and to color in general.

The plants we offer are fine ones of the very best size for transplanting and shipping. All are young and full of vigor.

In each list we show the following:

First, the name of the plant; second, ultimate height in inches; third, its flower color; fourth, its blooming season, and fifth, its individual price:

**Collection No. 1—Value \$7.85; cost to you \$6.15; 2 for \$11.75**

**Collection No. 2—Value \$8.15; cost to you \$6.50; 2 for \$12.45**

**Collection No. 3—Value \$5.90; cost to you \$5.00; 2 for \$ 9.70**

**ALL THREE COLLECTIONS—Value \$21.90—66 plants for \$16.50**

**6 Collections, 2 of each for \$32.00**

**Sent Prepaid**

### PERENNIAL COLLECTION No. 1

**A COLLECTION OF LOW GROWING PERENNIAL PLANTS  
ALL OF WHICH ARE SUITABLE FOR ROCK GARDENS**

**A \$7.85 Value for \$6.15**

**24 Plants—1 each of the following:**

<i>Achillea tomentosa</i> .....	4" yellow. June.....	\$0.35
<i>Ajuga reptans</i> .....	4" blue. May, June.....	.30
<i>Anemone hupehensis</i> .....	10" mauve rose. August till frost..	.35
<i>Anemone pulsatilla rubra</i> .....	12" violet. April, May.....	.40

Arabis alpina	12"	white. April, May	\$ .30
Aster alpinus	10"	lavender blue. May, June	.30
Dianthus alpinus alwoodii	6"	rose and pink. July, August	.30
Dianthus Rose Cushion	10"	bright rose. June, July	.35
Helianthemum "Fireball"	10"	double scarlet. June	.35
Heuchera rosamundi	18"	coral pink. May, June	.40
Iberis gibraltica	12"	lilac pink. May to July	.30
Iris pumila atrovioleacea	6"	violet and maroon. April-May	.30
Linum perenne	15"	blue. May to July	.30
Nepata mussini	8"	blue. May to August	.30
Phlox subulata "Blue Hill"	6"	light blue. Spring and Fall	.30
Saponaria ocymoides	8"	rosy pink. May, June	.30
Sedum album	4"	white. June	.25
Sedum kantschaticum	6"	orange yellow. July, August	.35
Sedum sieboldi	8"	pink. September	.40
Statice latifolia	18"	purplish blue. July, August	.35
Tunica saxifraga	10"	pastels. All summer	.35
Veronica incana	12"	violet blue. July, August	.30
Veronica rupestris nana	2"	Gentian blue. April, May	.30
Viola rosina	4"	soft pink. Spring and Fall	.35

Value \$7.85

**Sent to you for \$6.15 Prepaid**

**PERENNIAL COLLECTION No. 2**  
**A COLLECTION OF PERENNIAL PLANTS**  
**OF MEDIUM HEIGHT**  
**An \$8.15 Value for \$6.50**

**24 Plants—1 each of the following:**

Alyssum saxatile compactum	12"	yellow. April, May	\$0.30
Anemone alba	30"	white. August to November	.35
Anemone Kreimhilde	24"	double pink. August to Nov	.30
Artemisia Silver King	36"	silvery foliage. All summer	.30
Aquilegia Mrs. Scott Elliot	30"	pastels. May to July	.30
Asclepias tuberosa	18"	orange. July, August	.30
Aster Alderman Volkes	24"	rosy red. Fall	.40
Baptisia australis	24"	deep blue. June	.30
Campanula persicifolia	42"	bright blue. June, July	.35
Campanula pyramidalis	42"	white or blue. September	.35
Centaurea montana	24"	violet blue. July to Sept	.30
Delphinium dble. French Hyb.	36"	blue shades. Spring and Fall	.40
Dianthus barbatus	20"	blood red. May and June	.25
Dicentra spectabilis	24"	rosy red. May and June	.40
Eupatorium coelestinum	18"	lavender blue. Fall	.30
Gaillardia Portola Hyb.	36"	red and gold. June to Nov	.30
Gypsophila Bristol Fairy	30"	dbl. white. All summer	.40
Hemerocallis flava	36"	lemon yellow. July	.35
Phlox "Africa"	30"	brilliant red. Late summer	.35
Phlox "Von Lassberg"	40"	pure white. Late summer	.30
Platycodon grandiflorum	24"	blue. All summer	.35
Thalictrum glaucum	36"	yellow. June, July	.40
Tritoma "Towers of Gold"	36"	yellow. August and Sept	.40
Veronica "Blue Spires"	24"	blue. June, July	.40

Value \$8.15

**Sent to you for \$6.50 Prepaid**

**PERENNIAL COLLECTION No. 3**

**A COLLECTION OF TALL PERENNIAL PLANTS  
SUITABLE FOR BACKGROUND AND ACCENT**

**A \$5.95 Value for \$5.00**

**18 Plants—1 each of the following:**

Anchusa italica dropmore.....	4' deep blue. All summer.....	\$0.30
Artemesia vulg. lact.....	4' creamy plumes. August, Sept.	.30
Aster "Mrs. F. W. Raynor".....	3½' deep red. October.....	.35
Boconia cordata.....	7' creamy white. June to Sept.....	.30
Boltonia latissuama.....	5' bluish violet. July to Sept.....	.30
Delphinium "Wrexham".....	5' pastels and blues. Spring & Fall	.40
Digitalis gloxinoides.....	4½' rose pink. June, July.....	.30
Gypsophila pacifica.....	3½' misty pink. All summer.....	.40
Hibiscus officinalis.....	4' red. August, September.....	.40
Hollyhock Double.....	6' yellow. June, July.....	.30
Lathyrus latifolius.....	5' pink. All summer.....	.35
Iris "Princess Beatrice".....	4½' lavender blue. Spring.....	.20
Iris "Blue Gown".....	4' lavender and violet. Spring.....	.40
Iris kaempferi "Blue & Gold".....	3' blue and gold. June.....	.35
Lythrum roseum.....	4' rose. July, August.....	.30
Poppy "Orientale".....	3' orange scarlet. May, June.....	.30
Physostegia virg. "Vivid".....	3' violet mauve. August.....	.35
Salvia pitcheri.....	4' "Gentian" blue. August, Sept.	.35

Total Value \$5.95

**Sent to you for \$5.00 Prepaid**

## HOUSE AND BEDDING PLANTS

When Spring arrives, our greenhouses will be filled to bursting with lovely plants for your porch boxes, window boxes and urns, as well as numerous plants to beautify the interior of your home. Or perhaps you will wish something to beautify the grave of a loved one.

We are listing the plants in groups for outdoor and indoor plants, with those especially adapted to porch and window boxes starred (\*). All are sent postpaid unless otherwise stated.

### YELLOW CALLA LILIES

#### Calla Lily *Elliottiana*

Attractive, dark green foliage with creamy spots. Magnificent golden yellow flowers. Fine as a house or conservatory plant or may be planted out in April or May for beautiful summer and fall bloom.

Large blooming size bulbs—each \$0.30; 3 for \$0.75; \$2.50 per dozen.

### INDOOR PLANTS

**ALOE.** True Tiger variegata. A striking house-plant novelty. Needs little care or water. Deep green dagger-like leaves "tigered" with white. Can be kept for years.

From 1 $\frac{3}{4}$ " pots each \$0.25; 3 for \$0.65; \$2.50 per dozen.

**FERNS—Pteris varieties mixed.** These lovely little novelty ferns would grace the dining room or library table of any home. Let us send you several different ones for your dish garden or terrarium.

From 2 $\frac{1}{4}$ " pots—each \$0.20; 3 for \$0.55; \$1.00 per dozen.

**SELAGINELLA FERNS.** These dainty terrarium plants must be seen to be appreciated. Their delicate beauty defies description. The varieties we offer are:

**S. denticulata**—creeping.

**S. emmeliana**—semi upright.

**S. brauni**—dwarf.

From 2 $\frac{1}{4}$ " pots—each \$0.20; 3 for \$0.55; \$2.00 per dozen.

**TOLMIEA MEUZIESII, Piggy Back.** A new novelty which propagates new plants by carrying them on backs of the leaves. Will stand considerable shade. Lovely light green foliage.

Strong plants from 2 $\frac{1}{4}$ " pots. Each \$0.30; 3 for \$0.85; \$3.00 per doz.

**MARANTA KERCHOVIANA.** An unusual foliage plant with large, attractive, light green leaves regularly dotted with brownish red spots. Excellent for terrariums and dish gardens.

From 2 $\frac{1}{4}$ " pots—each \$0.40; 3 for \$1.10; \$4.00 per dozen.

**PHILODENDRON CORDATUM, Devil's Ivy.** The handsome, shiny, dark green, heart-shaped leaves stand almost any kind of treatment. Very popular for the mantelpiece, these vines do well even in steam-heated apartments.

Strong vines from 2 $\frac{1}{4}$ " pots—each \$0.25; 3 for \$0.70; \$2.50 per doz.

**SAXIFRAGA SARMENTOSA, Strawberry geranium.** These attractive favorites make excellent subjects for the window basket or dish gardens. We are all familiar with their dainty beauty.

From 2 $\frac{1}{4}$ " pots—each \$0.20; 3 for \$0.55; \$2.00 per dozen.

**OUTDOOR PLANTS FOR BEDDING AND BOXES**

**AGERATUM, Riverside.** Rich, purple-blue flowers on compact, bushy little plants. Fine for edging and border work.

From 2¼" pots—each \$0.20; dozen \$2.00; 100 for \$12.00.

\***ALOYSIA CITRIODORA, Lemon Verbena.** Its delicious, lemony fragrance makes it an outstanding plant for porch and window boxes. From 2¼" pots—each \$0.25; 3 for \$0.65; \$2.50 per dozen.

\***COLEUS.** All the colors. Red, purple, yellow, light green, dark green and combinations of several. Indispensable for porch and window boxes and fine for bedding. Beautiful in urns. Order by color. Husky plants from 2¼" pots—each \$0.15; \$1.50 per dozen; \$11.00 per 100.

**CUPHEA IGNEA, Cigar plant.** A dainty prostrate plant that blooms constantly. The yellow tipped deep red blossoms resemble a burning cigar. Several of these will add a great amount of color and interest to your porch or window box.

From 2¼" pots—each \$0.15; 3 for \$0.40; \$1.50 per dozen.

\***DRACENA INDIVISA, Blue dracena.** The tall blue-green spikes are a must in the porch box or urn.

From 3" pots—each \$0.30; 3 for \$0.85; \$3.00 per dozen.

From 4" pots, sent express collect—each \$0.40; 3 for \$1.10; \$4.00 per dozen.

\***FUCHSIA.** Fine for boxes and urns and excellent for bedding. We offer 3 varieties. They can all be kept over winter indoors.

**Black Prince.** The profuse blossoms are a gorgeous solid carmine. Grows fairly tall.

**Little Beauty.** The most popular of all. Many lovely flowers with carmine sepals and deep lilac corollas born on compact bushy plants.

**Pride of Orion.** Semi-double. Long pointed carmine sepals set off by pure white corollas and pink stamens. Outstanding.

All Fuchsias—from 3" pots—May 1st—each \$0.30; 3 for \$0.85; \$3.00 per dozen.

\***GERANIUMS.** These superb flower box and bedding plants need no introduction. We offer the following colors.

Deep Red	Apple Blossom Pink
Bright Red	Light Pink
Salmon Pink	White
Pink	Rose Scented

From 2¼" pots—each \$0.15; \$1.50 per dozen; \$11.00 per 100.

From 4" pots, sent express collect—each \$0.30; 3 for \$0.85; \$3.00 per dozen; \$24.00 per 100.

\***HELIOTROPE CENTAFLEUR.** Deep true heliotrope color with a white eye. Fine as a box or bedding plant or indoors in spring and fall. From 2¼" pots—each \$0.20; 3 for \$0.55; \$2.00 per dozen.

\***LANTANAS.** We offer the following fine varieties:

**alba perfecta.** Pure white.

**Countess de Biencourt.** Rose pink and cream.

**Craigi.** Cardinal red with gold center.

**Michael Schmidt.** Crimson-wine with blood red center.

The plants are a "must" for the porch or window box and are highly valuable for bedding.

From 2¼" pots—each \$0.20; \$2.00 per dozen; \$15.00 per 100.

\***VINCA MAJOR VARIEGATA, Variegated Myrtle or Periwinkle.** The old standby for porch box or urn. The long lush vines sometimes reach a length of six to seven feet. The foliage is variegated cream and green.

From 2¼" pots—each \$0.15; 3 for \$0.40; \$1.50 per dozen.

From 3" pots—each \$0.25; 3 for \$0.70; \$2.50 per dozen.

From 4" pots, sent express collect—each \$0.35; 3 for \$0.95; \$3.50 per dozen.



**I N D E X**

	Page
Apple Trees, Bearing Age.....	5
Apple Trees, Two and Three Year Old.....	6
Apricot Trees.....	6
Cherry Trees.....	7
Climbing Roses.....	15
Evergreens.....	21
Flower Seeds.....	4
French Hybrid Lilacs.....	Inside Front Cover
Grass Seed.....	16
Hardy Phlox.....	Back Cover
Home Orchard.....	5
Home Raspberry Patch.....	9
Home Strawberry Patch.....	9
House and Bedding Plants.....	27, 28
Hybrid Perpetual Roses.....	14
Hybrid Tea Roses.....	11, 12, 13
Ordering Instructions.....	30
Peach Trees.....	7
Pear Trees.....	8
Perennials.....	24, 25, 26
Plum Trees.....	8
Polyantha or Baby Rambler Roses.....	14
Quince Trees.....	6
Quintuplet Apple Trees.....	Inside Front Cover
Raspberry Plants.....	10
Shipping Instructions.....	Inside Back Cover
Shrubs.....	17, 18, 19, 20
Strawberry Plants.....	10
Trees.....	22, 23
Tree Roses.....	14
Vegetable Seeds.....	2, 3

## **PLEASE READ THIS PAGE BEFORE ORDERING**

**E**ACH YEAR throughout our 88 years of business we have dealt with many thousands of customers from coast to coast. Many have retained their confidence in us for half a century or more, only because of our sincere effort to co-operate and our strict adherence to a high standard of quality.

We appreciate this confidence in ordering from us and request your co-operation by complying with the following requests—so that we may give you the best possible service.

### **WHEN TO ORDER**

As soon as this catalog reaches you, send in your complete order for trees, plants and seeds, with definite shipping instructions; which we will follow as closely as possible. We will acknowledge your order immediately and if it is not the proper planting time, we will notify you. Planting seasons are limited and our shipping must all be done in a few weeks each year. If you will order early, you will aid us in serving you and assure receipt of your plants at the proper time, early in the season. At times weather conditions at our nursery cause unavoidable delay in preparing orders. However, we will not ship orders late enough to cause unnecessary risk unless you request that we do so.

### **HOW TO ORDER**

Please use order sheet next to this page and help us avoid misunderstanding by being accurate, and certain as to complete plant name. On your seed order, be sure to indicate quantity, whether pkts., ozs., or lbs. Errors are possible due to the rush of our busy seasons; therefore check order immediately upon arrival and notify us of any incorrect shipment.

### **CONVENIENT REMITTANCES**

Please make remittances by post office or express money order, check, bank draft, or (if currency) by registered mail. Write amount remitted in the space provided on order sheet. If you are able to completely price your order, please send full remittance. In case of C.O.D. kindly send a substantial deposit.

### **SUBSTITUTION**

So that you will receive the quantity of plants you ordered, we reserve the right to substitute in case we are sold out and unless you specify **No Substitution**. Any substitutions made by us will be of a variety of equal merit, as close in appearance and habit as possible to the variety ordered. We will always label with the correct name.

In case you do not allow a substitution, we will fill the order as completely as we can and refund the balance or issue a credit, as you desire.





## SHIPPING

All material offered in this catalog is perishable to a greater or less extent and the items vary considerably in weight and bulk. It therefore becomes necessary to use different methods of transportation to fit the particular item as well as to insure safe delivery.

All items marked "Postpaid" will be sent prepaid to any office in the United States.

By express or freight, the charges are not prepaid, but are collectible at destination. All packing is done thoroughly and substantially, and without charge.

Perennials, strawberries and certain other particularly perishable plants are never sent by freight.

Orders for stock from the nursery will be shipped at the proper time for transplanting or as soon as possible after order is received. Our land is cooled and vegetation kept dormant by proximity to Lake Erie, several weeks later than other sections, even close by. This enables us to dig and ship stock in perfect condition after trees are in full leaf in most other sections.

## OUR GUARANTEE

All trees, plants, seeds and other goods sold by us are guaranteed to reach our customers in good condition, and we will promptly replace any item not so received, provided we are notified immediately, giving description of condition upon arrival. If plants are damaged in transit, also notify carrier immediately.

**Non-Warranty.** We give no warranty, expressed or implied, as to description, quality, growth, productiveness, or any other matter, of any stock we sell. It is mutually agreed that our total liability for untruthfulness to name shall be limited upon satisfactory proof, to free replacement, or refund of the purchase price plus interest.

Our plants are healthy and vigorous when we send them out, but since they are living organisms, they are subject to injury from natural causes as well as improper planting and maintenance. We do not, therefore, guarantee continued growth and we know you would not expect us to replace plants lost in your garden due to conditions beyond our control.

## GLORY OF THE GARDEN COLLECTION OF HARDY PHLOX

(Phlox decussata)

The backbone of the perennial border . . . the unfailing and indispensable cut flower . . . the final touch of nature's paint brush. These are some of the terms that may be used to describe this most valuable adjunct to everyone's garden. They never fail, their season lasting from late June through the hot summer months when other flowers are scarce, until nature puts them to rest with Jack Frost's silvery hand. Words fail to describe the delicate beauty and bold radiance of their colors.

Africa. Brilliant carmine red. Blood red eye.....	\$0.35
B. Comte. Long stems, large heads, rich French purple.....	.30
Daily Sketch. Large florets, salmon pink, red eye.....	.45
E. I. Farrington. Salmon with pink blush, violet eye .....	.30
Emain Macha. Deepest true red.....	.50
Leo Schlageter. Most vivid fiery red.....	.45
Mrs. Jenkins. Pure white. Late flowering.....	.30
Nordlicht. Warm blush lilac. Violet-red eye.....	.40
P. D. Williams. Immense florets, rose pink, non-fading.....	.50
Von Lassburg. Huge trusses of waxy white.....	.30
<b>Value</b>	<b>\$3.85</b>

10 plants, 1 each of the above individually labeled for.....	\$2.90
5 plants, your selection.....	1.75
5 plants, our selection.....	1.55

**Sent Postpaid**